

## All-time high spreads aid strong margin performance

The manmade yarn market has been characterised by strong demand and supply constraint within the industry, which has been beneficial for Filatex. After a strong performance in Q3, Filatex India (FIL) reported yet another robust quarter, driven by sustained enhancement in yarn spreads. Revenue for the quarter grew 18% QoQ (28% YoY) to ₹ 852.8 crore, mainly driven by blended realisations increasing 32% QoQ (36.4% YoY). Gross spreads (including inventory gain) increased substantially by 49% QoQ (111% YoY) to ₹ 37.3/kg, with gross margins expanding ~400 bps QoQ (1200 bps YoY) to 30.0%. Commencement of additional DTY capacity has also contributed to higher margins. Subsequently, EBITDA margins expanded significantly by 550 bps QoQ (1280 bps YoY) to 22.1%, with absolute EBITDA increasing by 57% YoY to ₹ 188.7 crore (EBITDA/kg: ₹ 24.3 vs. ₹ 14 in Q3FY21). Ensuing PAT came in at ₹ 118.5 crore vs. ₹ 66 crore in Q3FY21. We expect EBITDA margins for FY22E-FY23E to stay at 15-16% driven by robust demand in both domestic, export markets and capacity constraint due to 5-6% of industry capacity being not functional owing to fire at one of major manufacturer's production facility (expected to restart only by mid CY22). However, in the near term, demand may be negatively impacted owing to re-imposition of lockdown in certain states. Also the management indicated the spreads have declined in April but they expect demand to pick up once lockdown restrictions are removed while spreads should also start trending upwards.

## Capex to focus on capacity expansion of high margin products

FIL is planning a capex of ₹ 360 crore in FY22E-23E. In FY22, it is planning a capex of ~ ₹ 175 crore and aiming to add 100 TPD capacity of POY and DTY (expected to be commissioned in Q1FY23). Further, it is planning a capex of ₹ 130-150 crore in FY23 to add 100 TPD of recycled chips (that have significantly higher realisation and margin than the normal polyester chips). The company is constantly focussing on enhancing the share of value added products as they yield higher margin. We expect the share of value added products to increase from 64% in FY20 to ~ 82% in FY23E, which would provide a fillip to the margin profile of the company.

## Valuation & Outlook

Enhanced government support for polyester sector through production linked incentive (PLI) scheme and withdrawal of anti-dumping duty on PTA (raw material for polyester) augur well for the profitable growth of polyester players. The strong performance in FY21 has enabled the company to generate healthy cash flows, which has enabled it to reduce debt by ~ ₹ 140 crore (D/E: 0.8x in FY21 vs. 1.2x in FY20). We expect further deleveraging to result in D/E of ~0.2x in FY23E. Factoring in better-than-expected earnings performance in H2FY21 and improved product margins, we revise upwards our earnings estimates for FY22E and introduce FY23E estimates. Subsequently, we expect RoCE to get enhanced by 600 bps to 28% over FY21-23E. We reiterate our **BUY** recommendation on the stock with a revised target price of ₹ 90 (6.0x FY23E EPS, earlier target price: ₹ 85).

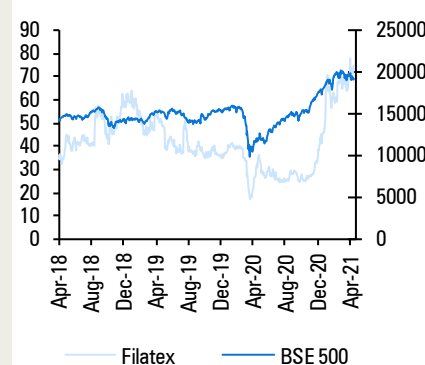


Filatex India Limited

### Particulars

Particulars	Amount
Market Capitalisation (₹ crore)	1,603.7
Total Debt (FY21) (₹ crore)	576.0
Cash (FY21) (₹ crore)	36.0
EV (₹ crore)	2,143.7
52 Week H / L	81 / 22
Equity Capital (₹ crore)	43.9
Face Value (₹)	2.0

### Price Performance



### Risk to our call

- Any sustained surge in raw material prices (PTA/MEG) that FIL is unable to pass on to end users can suppress margins of the company
- Delay in implementing power project can keep power cost higher than our assumption and result in lower than expected operating margins

### Research Analyst

Bharat Chhoda  
bharat.chhoda@icicisecurities.com

Cheragh Sidhwa  
cheragh.sidhwa@icicisecurities.com

### Key Financial Summary

₹ crore	FY19	FY20	FY21E	FY22E	FY23E	CAGR (FY21-23E)
Net Sales	2,874.1	2,782.1	2,227.2	2,987.6	3,361.6	22.9%
EBITDA	216.5	222.2	347.3	460.1	517.7	22.1%
Adjusted PAT	84.8	121.5	165.8	268.7	320.3	39.0%
P/E (x)	18.7	13.2	9.7	6.0	5.0	
EV/EBITDA (x)	9.9	10.3	6.2	4.4	3.6	
RoCE (%)	17.0	14.0	22.3	27.3	28.4	
RoE (%)	18.0	20.4	21.7	26.3	24.2	

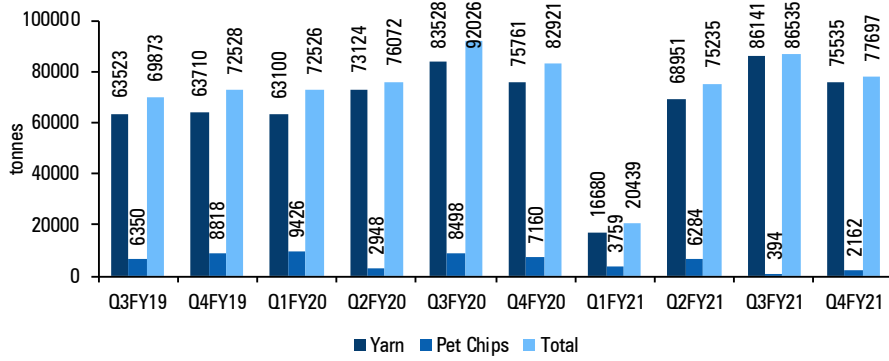
Source: ICICI Direct Research, Company.

## Conference Call Highlights

- The management indicated that it could not utilise the export opportunity fully due to shipping issues and high freight rates. The global demand for value added polyester products was strong. Global yarn demand for polyester is increasing annually by ~ 3-3.5 million tonnes, which is difficult to meet with current capacity and reduced focus in the segment by China. Hence, it provides long term opportunity for Indian players in the segment
- The second wave of the pandemic has led to a decline in demand to a certain extent. The management believes that if the lockdown/restrictions are for a short period then demand should pick up pace post lifting of restrictions
- On the spreads front, the management said the spread in Q4FY21 was higher due to inventory gains. However, on a sustainable basis, it expects spreads to remain near Q3FY21 levels
- Volume share of value added products in Q4FY21 was at ~83%. The company converted most of the raw material to higher margin yarn due to enhanced demand and volume share of lower margin PET chips was at ~3% during the quarter
- The company had commenced its 1 MW solar power plant at Dahej and 0.4 MW plant in Dadra during Q3FY21. FIL is also implementing a 30 MW thermal power project, which has been delayed due to pandemic related restrictions and is expected to commence operation from May 2021. The captive thermal power plant is expected to reduce the power cost for FIL and result in annual power cost savings to the tune of ₹ 40-45 crore
- The company is planning a foray into recycled polyester segment with a capex of ~ ₹ 250 crore in FY23-24. In the first phase, the company is planning to set up a 100 TPD plant for recycled chips, which would entail a capex of ~ ₹ 130 crore. In the second phase to be executed in FY24, the company is planning to add recycled polyester yarn capacity with a capex of ~ ₹ 120 crore. The company is planning to set up the new plant under a subsidiary to avail lower tax rate benefits. Recycled polyester is in short supply globally and is experiencing strong demand from major global brands. The realisations of recycled polyester are higher by ~ 40-50% compared to normal polyester. It also has a better profitability profile

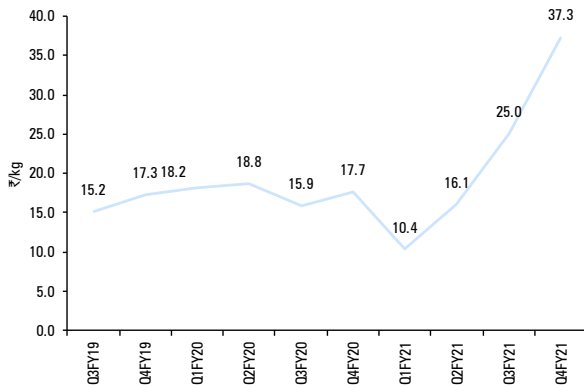
## Financial story in charts

Exhibit 1: Volume recovery trend



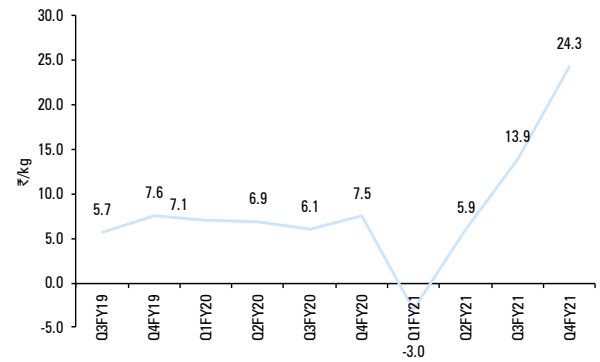
Source: Company, ICICI Direct Research

Exhibit 2: Gross spread trend (quarterly)



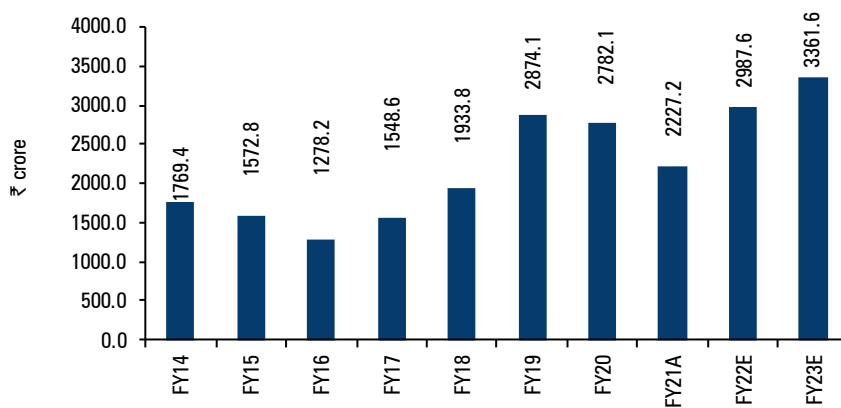
Source: Company, ICICI Direct Research

Exhibit 3: EBITDA/kg trend (quarterly)



Source: Company, ICICI Direct Research

Exhibit 4: Revenue trend



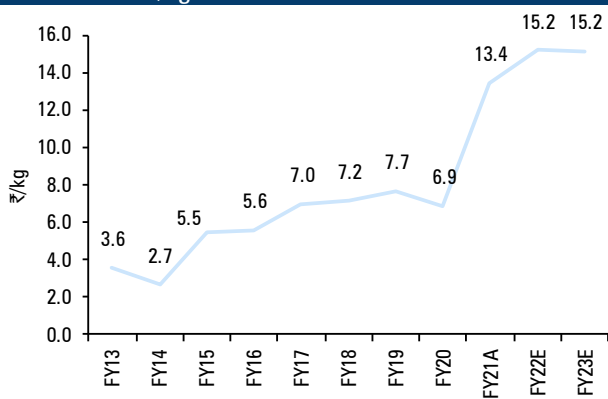
Source: Company, ICICI Direct Research

Exhibit 5: Consistent increase in share of value added products

Product categories	FY18	FY19	FY20	FY21A	FY22E	FY23E
Polyester chips	11.0	9.2	6.7	2.8	2.6	2.3
Polyester POY	21.3	18.4	23.7	14.0	13.9	12.8
<b>Polyester DTY (value added products)</b>	<b>33.9</b>	<b>28.5</b>	<b>29.9</b>	<b>41.6</b>	<b>42.0</b>	<b>44.2</b>
<b>Polyester FDY (value added products)</b>	<b>26.3</b>	<b>39.2</b>	<b>34.4</b>	<b>36.5</b>	<b>37.8</b>	<b>35.2</b>
<b>Recycled Chips</b>	-	-	-	-	-	<b>2.4</b>
Polypropylene	3.2	2.3	2.4	1.7	1.4	1.3
Narrow fabrics	1.2	0.8	0.7	0.7	0.8	0.7
Monofilament yarn (discontinued)	0.3	0.0	0.0	0.0	0.0	0.0
Other	3.0	1.6	2.2	2.7	1.6	1.2

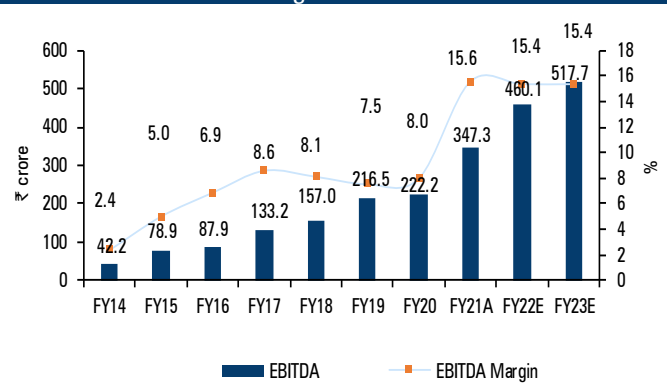
Source: Company, ICICI Direct Research

Exhibit 6: EBITDA/kg trend



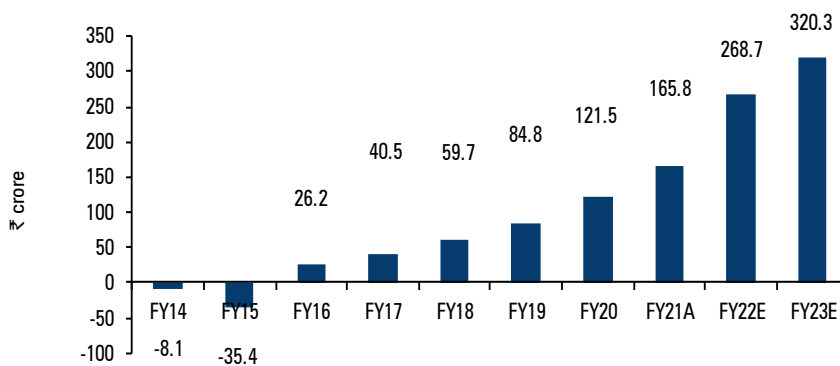
Source: Company, ICICI Direct Research

Exhibit 7: EBITDA and margin trend



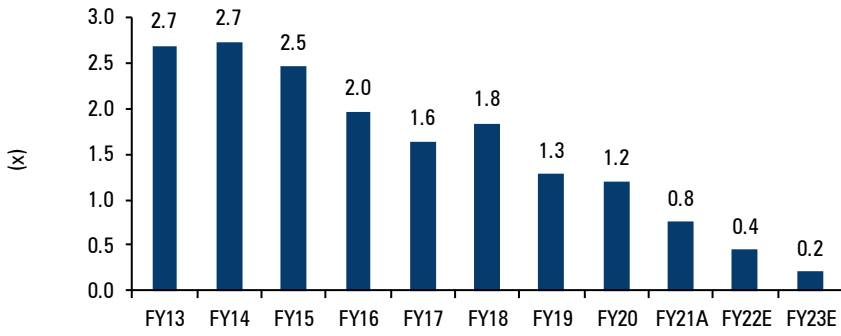
Source: Company, ICICI Direct Research

Exhibit 8: PAT trend



Source: Company, ICICI Direct Research

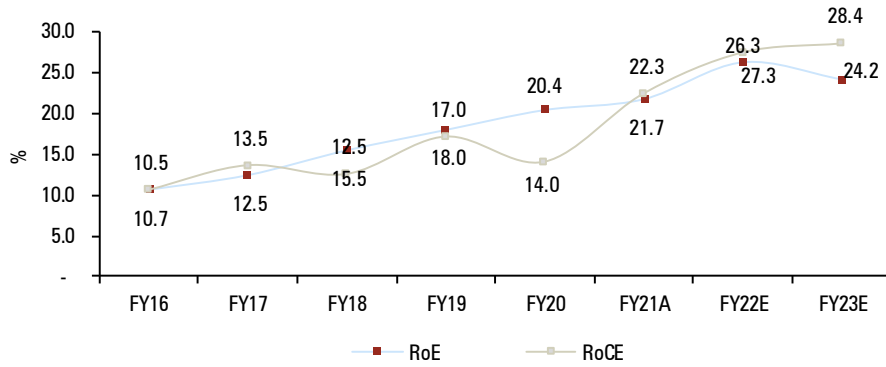
Exhibit 9: Debt/equity ratio trend



Robust profitability expected to generate healthy free cash flows, which will aid in reducing debt by ~ ₹ 300 crore in FY22-23E

Source: Company, ICICI Direct Research

Exhibit 10: Return ratio trend



Source: Company, ICICI Direct Research

## Financial Summary

### Exhibit 11: Profit & Loss Statement

(Year-end March)	FY20	FY21A	FY22E	FY23E
<b>Net Sales</b>	2,782.1	2,227.15	2,987.6	3,361.6
Growth (%)	43.9	(19.9)	34.1	12.5
Total Raw Material Cost	2,214.0	1,578.2	2,180.9	2,450.6
Gross Margins (%)	20.4	29.1	27.0	27.1
Employee Expenses	74.7	67.1	80.7	94.1
Other Expenses	271.3	234.5	265.9	299.2
Total Operating Expenditure	2,559.9	1,879.8	2,527.5	2,844.0
<b>EBITDA</b>	222.2	347.3	460.1	517.7
EBITDA Margin	8.0	15.6	15.4	15.4
Interest	61.3	58.8	44.7	26.5
Depreciation	51.3	58.4	65.2	71.5
Other Income	12.4	9.5	9.0	8.5
Exceptional Expense	-	-	-	-
PBT	122.0	239.6	359.2	428.2
Total Tax	0.5	73.8	90.5	107.9
<b>Profit After Tax</b>	121.5	165.8	268.7	320.3

Source: Company, ICICI Direct Research

### Exhibit 12: Cash Flow Statement

(Year-end March)	FY20	FY21A	FY22E	FY23E
Profit/(Loss) after taxation	121.5	165.8	268.7	320.3
Add: Depreciation	51.3	58.4	65.2	71.5
Net Increase in Current Assets	-29.9	-107.0	-22.5	-46.0
Net Increase in Current Liabilities	-6.8	118.7	-24.8	34.8
<b>CF from operating activities</b>	<b>136.1</b>	<b>235.8</b>	<b>286.6</b>	<b>380.7</b>
(Inc)/dec in Investments	0.0	0.0	0.1	0.0
(Inc)/dec in Fixed Assets	-192.3	-142.6	-179.9	-180.0
Others	-58.0	26.6	1.5	1.4
<b>CF from investing activities</b>	<b>-250.3</b>	<b>-116.0</b>	<b>-178.3</b>	<b>-178.6</b>
Inc / (Dec) in Equity Capital	0.4	0.2	0.0	0.0
Inc / (Dec) in Loan	113.3	-141.3	-119.9	-179.7
Others	-21.9	35.5	4.1	-5.3
<b>CF from financing activities</b>	<b>91.8</b>	<b>-105.5</b>	<b>-115.8</b>	<b>-185.0</b>
Net Cash flow	-22.3	14.3	-7.5	17.1
Opening Cash	44.1	21.8	36.0	28.6
<b>Closing Cash</b>	<b>21.8</b>	<b>36.1</b>	<b>28.6</b>	<b>45.7</b>

Source: Company, ICICI Direct Research

### Exhibit 13: Balance Sheet

(Year-end March)	FY20	FY21A	FY22E	FY23E
Equity Capital	43.9	44.2	44.2	44.2
Reserve and Surplus	550.9	718.3	978.9	1,280.0
Total Shareholders funds	594.9	762.5	1,023.1	1,324.1
Total Debt	717.3	576.0	456.1	276.4
Non Current Liabilities	68.6	102.6	114.8	128.7
<b>Source of Funds</b>	<b>1,380.8</b>	<b>1,441.1</b>	<b>1,594.0</b>	<b>1,729.2</b>
Gross block	1,268.4	1,305.8	1,435.8	1,745.8
Less: Accum depreciation	153.1	211.4	276.6	348.2
Net Fixed Assets	1,115.3	1,094.4	1,159.2	1,397.7
Capital WIP	25.1	130.1	180.0	50.0
Intangible assets	0.7	0.8	0.8	0.8
Investments	0.0	0.1	-	-
Inventory	171.7	254.4	245.6	276.3
Cash	21.8	36.0	28.6	45.7
Debtors	118.7	121.7	147.3	156.6
Loans & Advances & Other CA	92.9	114.2	119.9	125.9
Total Current Assets	405.0	526.3	541.4	604.4
Creditors	186.0	274.3	245.6	276.3
Provisions & Other CL	54.6	85.1	89.0	93.1
Total Current Liabilities	240.7	359.3	334.5	369.4
Net Current Assets	164.4	167.0	206.8	235.0
LT L& A, Other Assets	75.3	48.7	47.2	45.7
Other Assets	0.0	0.0	0.0	0.0
<b>Application of Funds</b>	<b>1,380.8</b>	<b>1,441.1</b>	<b>1,594.0</b>	<b>1,729.2</b>

Source: Company, ICICI Direct Research

### Exhibit 14: Key Ratios

(Year-end March)	FY20	FY21A	FY22E	FY23E
<b>Per share data (₹)</b>				
EPS	5.5	7.5	12.2	14.5
Cash EPS	7.9	10.2	15.1	17.7
BV	27.1	34.5	46.3	60.0
DPS	0.0	0.0	0.4	0.9
Cash Per Share	1.0	1.6	1.3	2.1
<b>Operating Ratios (%)</b>				
EBITDA margins	8.0	15.6	15.4	15.4
PBT margins	6.1	13.0	13.2	13.3
Net Profit margins	4.4	7.4	9.0	9.5
Inventory days	22.5	41.7	30.0	30.0
Debtor days	15.6	19.9	18.0	17.0
Creditor days	24.4	44.9	30.0	30.0
<b>Return Ratios (%)</b>				
RoE	20.4	21.7	26.3	24.2
RoCE	14.0	22.3	27.3	28.4
RoIC	14.5	25.5	31.8	30.2
<b>Valuation Ratios (x)</b>				
P/E	13.2	9.7	6.0	5.0
EV / EBITDA	10.3	6.2	4.4	3.6
EV / Sales	0.8	1.0	0.7	0.5
Market Cap / Revenues	0.6	0.7	0.5	0.5
Price to Book Value	2.7	2.1	1.6	1.2
<b>Solvency Ratios</b>				
Debt / Equity	1.2	0.8	0.4	0.2
Debt/EBITDA	3.2	1.7	1.0	0.5
Current Ratio	1.6	1.4	1.5	1.5
Quick Ratio	0.9	0.7	0.8	0.8

Source: Company, ICICI Direct Research

## RATING RATIONALE

ICICI Direct endeavors to provide objective opinions and recommendations. ICICI Direct assigns ratings to its stocks according to their notional target price vs. current market price and then categorizes them as Buy, Hold, Reduce and Sell. The performance horizon is two years unless specified and the notional target price is defined as the analysts' valuation for a stock

Buy: >15%

Hold: -5% to 15%;

Reduce: -15% to -5%;

Sell: <-15%



**Pankaj Pandey**

**Head – Research**

**pankaj.pandey@icicisecurities.com**

**ICICI Direct Research Desk,  
ICICI Securities Limited,  
1st Floor, Akruiti Trade Centre,  
Road No 7, MIDC,  
Andheri (East)  
Mumbai – 400 093  
research@icicidirect.com**

## ANALYST CERTIFICATION

I/We, Bharat Chhoda, MBA, Cheragh Sidhwa MBA, Research Analysts, authors and the names subscribed to this report, hereby certify that all of the views expressed in this research report accurately reflect our views about the subject issuer(s) or securities. We also certify that no part of our compensation was, is, or will be directly or indirectly related to the specific recommendation(s) or view(s) in this report. It is also confirmed that above mentioned Analysts of this report have not received any compensation from the companies mentioned in the report in the preceding twelve months and do not serve as an officer, director or employee of the companies mentioned in the report.

## Terms & conditions and other disclosures:

ICICI Securities Limited (ICICI Securities) is a full-service, integrated investment banking and is, inter alia, engaged in the business of stock brokering and distribution of financial products.

ICICI Securities is Sebi registered stock broker, merchant banker, investment adviser, portfolio manager and Research Analyst. ICICI Securities is registered with Insurance Regulatory Development Authority of India Limited (IRDAI) as a composite corporate agent and with PFRDA as a Point of Presence. ICICI Securities Limited Research Analyst SEBI Registration Number - INH000000990. ICICI Securities Limited SEBI Registration is INZ000183631 for stock broker. ICICI Securities is a subsidiary of ICICI Bank which is India's largest private sector bank and has its various subsidiaries engaged in businesses of housing finance, asset management, life insurance, general insurance, venture capital fund management, etc. ("associates"), the details in respect of which are available on [www.icicibank.com](http://www.icicibank.com).

ICICI Securities is one of the leading merchant bankers/ underwriters of securities and participate in virtually all securities trading markets in India. We and our associates might have investment banking and other business relationship with a significant percentage of companies covered by our Investment Research Department. ICICI Securities and its analysts, persons reporting to analysts and their relatives are generally prohibited from maintaining a financial interest in the securities or derivatives of any companies that the analysts cover.

Recommendation in reports based on technical and derivative analysis centre on studying charts of a stock's price movement, outstanding positions, trading volume etc as opposed to focusing on a company's fundamentals and, as such, may not match with the recommendation in fundamental reports. Investors may visit [icicidirect.com](http://icicidirect.com) to view the Fundamental and Technical Research Reports.

Our proprietary trading and investment businesses may make investment decisions that are inconsistent with the recommendations expressed herein.

ICICI Securities Limited has two independent equity research groups: Institutional Research and Retail Research. This report has been prepared by the Retail Research. The views and opinions expressed in this document may or may not match or may be contrary with the views, estimates, rating, and target price of the Institutional Research.

The information and opinions in this report have been prepared by ICICI Securities and are subject to change without any notice. The report and information contained herein is strictly confidential and meant solely for the selected recipient and may not be altered in any way, transmitted to, copied or distributed, in part or in whole, to any other person or to the media or reproduced in any form, without prior written consent of ICICI Securities. While we would endeavour to update the information herein on a reasonable basis, ICICI Securities is under no obligation to update or keep the information current. Also, there may be regulatory, compliance or other reasons that may prevent ICICI Securities from doing so. Non-rated securities indicate that rating on a particular security has been suspended temporarily and such suspension is in compliance with applicable regulations and/or ICICI Securities policies, in circumstances where ICICI Securities might be acting in an advisory capacity to this company, or in certain other circumstances.

This report is based on information obtained from public sources and sources believed to be reliable, but no independent verification has been made nor is its accuracy or completeness guaranteed. This report and information herein is solely for informational purpose and shall not be used or considered as an offer document or solicitation of offer to buy or sell or subscribe for securities or other financial instruments. Though disseminated to all the customers simultaneously, not all customers may receive this report at the same time. ICICI Securities will not treat recipients as customers by virtue of their receiving this report. Nothing in this report constitutes investment, legal, accounting and tax advice or a representation that any investment or strategy is suitable or appropriate to your specific circumstances. The securities discussed and opinions expressed in this report may not be suitable for all investors, who must make their own investment decisions, based on their own investment objectives, financial positions and needs of specific recipient. This may not be taken in substitution for the exercise of independent judgment by any recipient. The recipient should independently evaluate the investment risks. The value and return on investment may vary because of changes in interest rates, foreign exchange rates or any other reason. ICICI Securities accepts no liabilities whatsoever for any loss or damage of any kind arising out of the use of this report. Past performance is not necessarily a guide to future performance. Investors are advised to see Risk Disclosure Document to understand the risks associated before investing in the securities markets. Actual results may differ materially from those set forth in projections. Forward-looking statements are not predictions and may be subject to change without notice.

ICICI Securities or its associates might have managed or co-managed public offering of securities for the subject company or might have been mandated by the subject company for any other assignment in the past twelve months.

ICICI Securities or its associates might have received any compensation from the companies mentioned in the report during the period preceding twelve months from the date of this report for services in respect of managing or co-managing public offerings, corporate finance, investment banking or merchant banking, brokerage services or other advisory service in a merger or specific transaction.

ICICI Securities encourages independence in research report preparation and strives to minimize conflict in preparation of research report. ICICI Securities or its associates or its analysts do not receive any compensation or other benefits from the companies mentioned in the report or third party in connection with preparation of the research report. Accordingly, neither ICICI Securities nor Research Analysts and their relatives have any material conflict of interest at the time of publication of this report.

Compensation of our Research Analysts is not based on any specific merchant banking, investment banking or brokerage service transactions.

ICICI Securities or its subsidiaries collectively or Research Analysts or their relatives do not own 1% or more of the equity securities of the Company mentioned in the report as of the last day of the month preceding the publication of the research report.

Since associates of ICICI Securities and ICICI Securities as a entity are engaged in various financial service businesses, they might have financial interests or beneficial ownership in various companies including the subject company/companies mentioned in this report.

ICICI Securities may have issued other reports that are inconsistent with and reach different conclusion from the information presented in this report.

Neither the Research Analysts nor ICICI Securities have been engaged in market making activity for the companies mentioned in the report.

We submit that no material disciplinary action has been taken on ICICI Securities by any Regulatory Authority impacting Equity Research Analysis activities.

This report is not directed or intended for distribution to, or use by, any person or entity who is a citizen or resident of or located in any locality, state, country or other jurisdiction, where such distribution, publication, availability or use would be contrary to law, regulation or which would subject ICICI Securities and affiliates to any registration or licensing requirement within such jurisdiction. The securities described herein may or may not be eligible for sale in all jurisdictions or to certain category of investors. Persons in whose possession this document may come are required to inform themselves of and to observe such restriction.

Since associates of ICICI Securities and ICICI Securities as a entity are engaged in various financial service businesses, they might have financial interests or beneficial ownership in various companies including the subject company/companies mentioned in this report.

ICICI Securities may have issued other reports that are inconsistent with and reach different conclusion from the information presented in this report.

Neither the Research Analysts nor ICICI Securities have been engaged in market making activity for the companies mentioned in the report.

We submit that no material disciplinary action has been taken on ICICI Securities by any Regulatory Authority impacting Equity Research Analysis activities.

This report is not directed or intended for distribution to, or use by, any person or entity who is a citizen or resident of or located in any locality, state, country or other jurisdiction, where such distribution, publication, availability or use would be contrary to law, regulation or which would subject ICICI Securities and affiliates to any registration or licensing requirement within such jurisdiction. The securities described herein may or may not be eligible for sale in all jurisdictions or to certain category of investors. Persons in whose possession this document may come are required to inform themselves of and to observe such restriction.