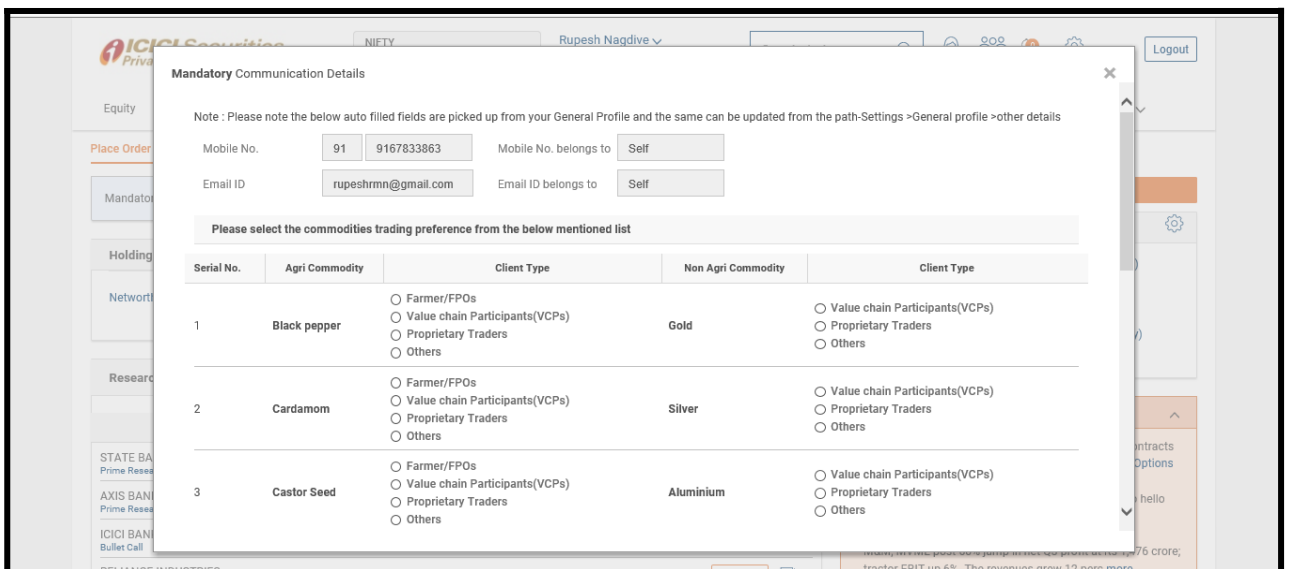


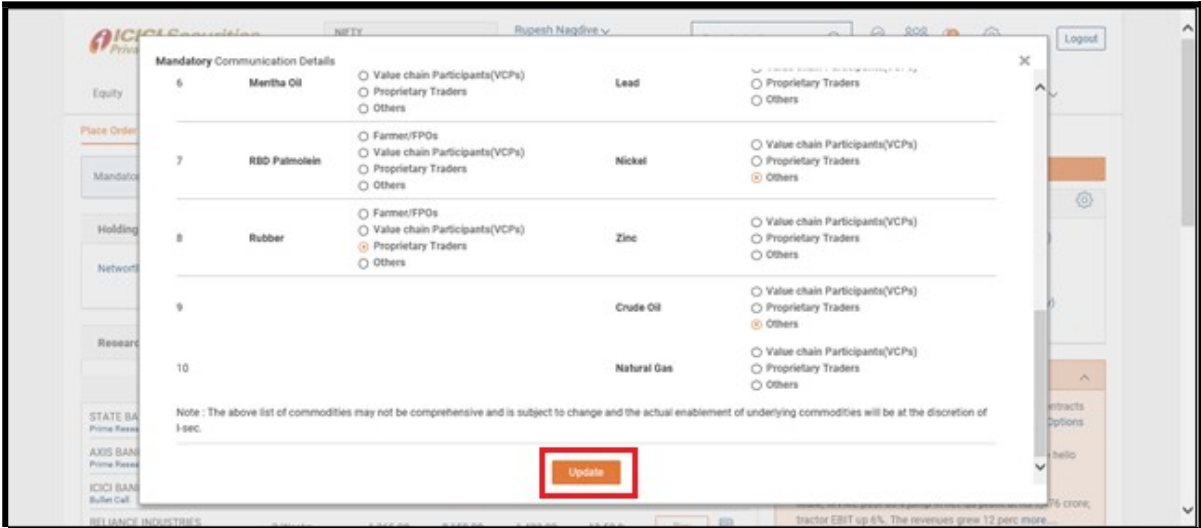
## Order Placement Flow in Commodities

1. You need to accept online Commodity Terms and Conditions which will be available post clicking on 'Commodity' segment tab.



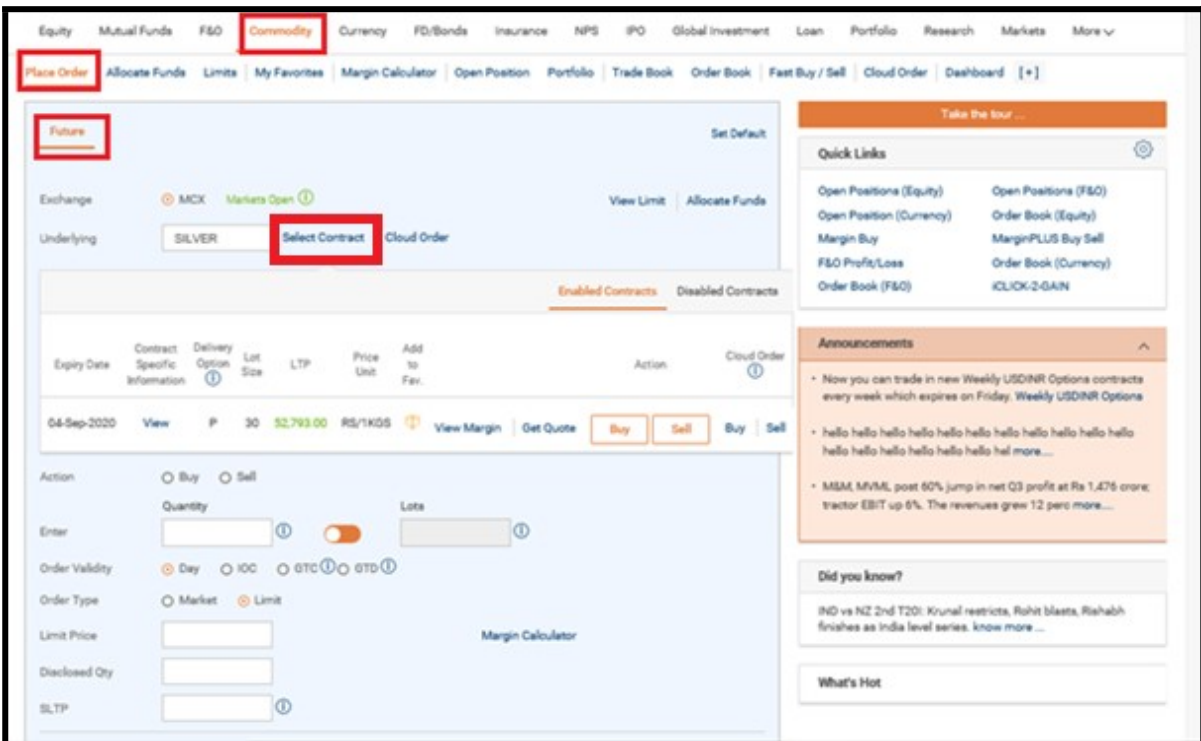
2. Mandatory Communication Details is available post Terms and Condition acceptance wherein you need to update communication details and Trading Preferences by clicking on "Update" button





3. Once Mandatory Communication Details is successfully updated and confirmation of Unique Client Code is received from Exchange, you can place orders in commodity futures product by visiting Commodity > Place Order > Futures.

You can view contract details to Buy/Sell post clicking on 'Select Contract' link



4. Once order placement related details are entered like Quantity in lot size or Lots, Market or Limit Price etc., you can click on “Submit” button to proceed with the order placement.

The screenshot shows the 'Future' order placement interface. The 'Underlying' is 'SILVER' with contract 'FUT-SILVER-04-Sep-2020'. The 'Action' is 'Buy'. The 'Quantity' is '30' KGS (1 Lot = 30 Quantity) and 'Lots' is '1'. The 'Order Validity' is 'Day'. The 'Order Type' is 'Limit'. The 'Limit Price' is '52790' RS/1KGS. The 'Market Price' is '52,793.00'. The 'Submit' button is highlighted with a red box.

Field	Value
Exchange	MCX
Underlying	SILVER
Contract	FUT-SILVER-04-Sep-2020
Action	Buy
Quantity	30 KGS
Lots	1
Order Validity	Day
Order Type	Limit
Limit Price	52790 RS/1KGS
Market Price	52,793.00

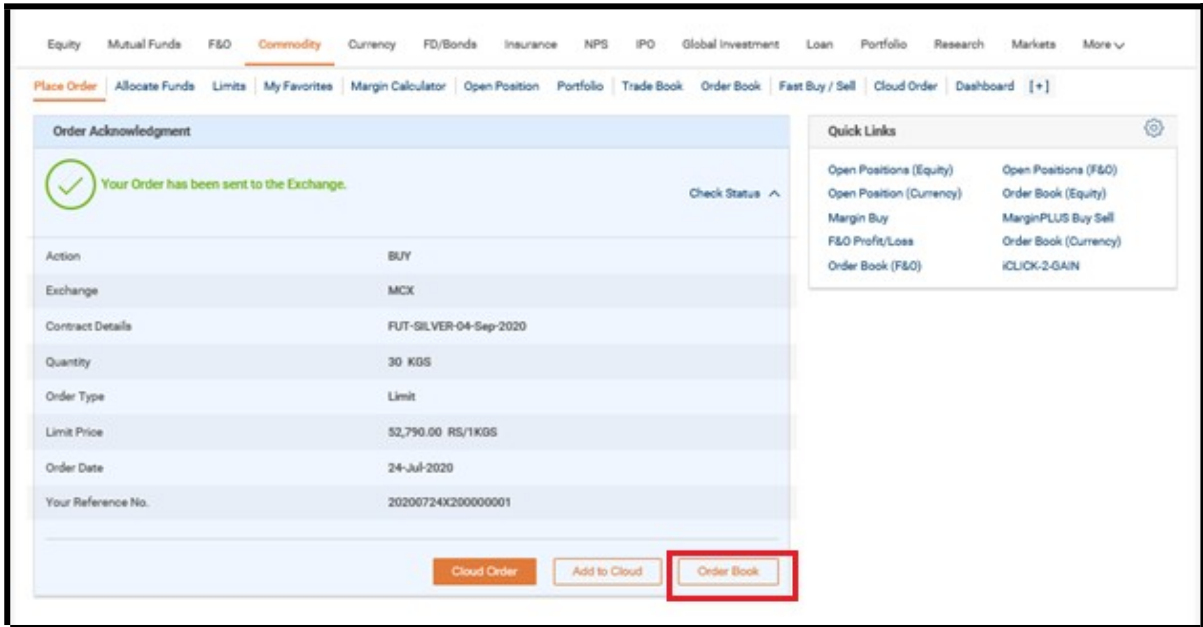
5. Order Verification page containing order details will get displayed post clicking on “Submit” button.

The screenshot shows the 'Order Verification' page. The order details are as follows:

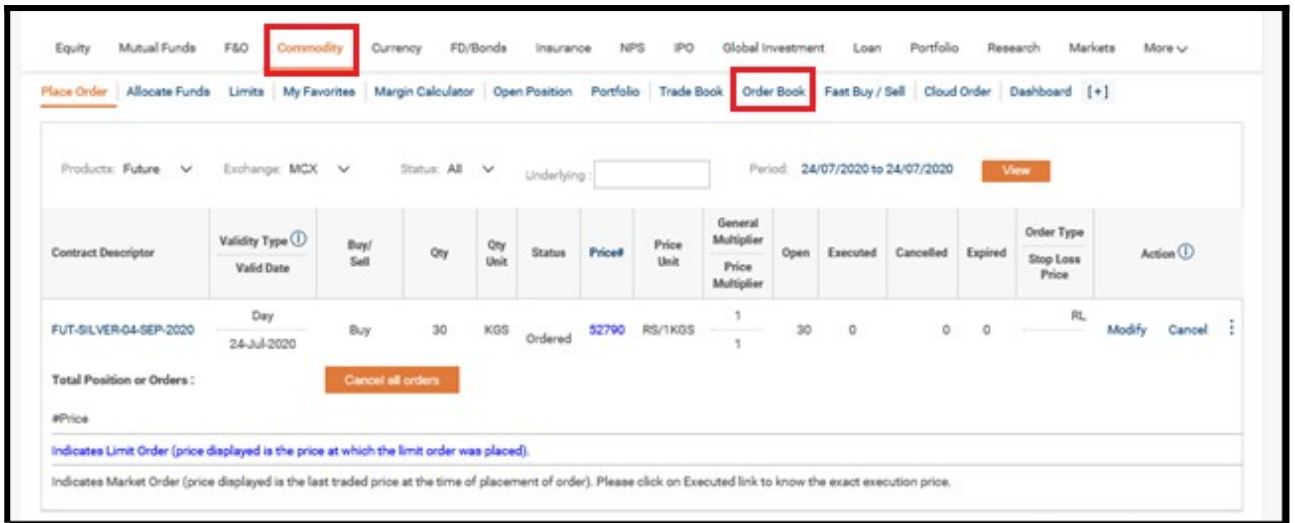
Field	Value
Action	BUY
Exchange	MCX
Contract Details	FUT-SILVER-04-Sep-2020
Quantity	30 KGS
Order Type	Limit
Limit Price	52,790.00 RS/1KGS
Last Traded price	52,793.00
Estimated Order Value	1,583,700.00
Contract Expiry Date	04-Sep-2020
Order Validity	24-Jul-2020
Stop Loss Trigger Price	0.00

The 'Proceed' button is highlighted with a red box.

6. Order acknowledgement page will be displayed post clicking on “Proceed” button.



7. You can click on Order Book button highlighted above to visit Order book to view the status of the order placed and its details. Alternatively, Order book can be visited by clicking on Commodity tab > Order Book link.



8. On execution of the order, you can visit Trade Book in order to view the executed order related details. Commodity Tab > Trade Book

ICICI Securities Private Wealth Management

NIFTY SENSEX | Rupesh Nagdive | 8309003732 Jul 24, 2020, 15:45 IST | Search stocks | Logout

Equity Mutual Funds F&O **Commodity** Currency FD/Bonds Insurance NPS IPO Global Investment Loan Portfolio Research Markets More

Place Order Allocate Funds Limits My Favorites Margin Calculator Open Position **Trade Book** Order Book Fast Buy / Sell Cloud Order Dashboard [+]

Products: Future Exchange: MCX Action: All Underlying: Period: 24/07/2020 to 24/07/2020 View Download

Trade Date	Contract Descriptor	Exch	Action	Qty	Qty Unit	Price#	Price Unit	Price Multiplier	General Multiplier	Value	Brokerage	Taxes (Incl of all charges)	Order Ref.	Contract Note no.	
24-Jul-2020	FUT-SILVER-04-Sep-2020-S	MCX	Sell	30	KGS	52,800.00	RS/1KGS	1	1	1,584,000.00	0.00	0.00	20200724X200000003	20200724X200000003	
24-Jul-2020	FUT-SILVER-04-Sep-2020-S	MCX	Buy	30	KGS	52,900.00	RS/1KGS	1	1	1,587,000.00	0.00	0.00	20200724X200000002	20200724X200000002	
Total										60			3,171,000.00		

#Price  
Indicates Limit Order (price displayed is the price at which the limit order was placed).  
Indicates Market Order (price displayed is the last traded price at the time of placement of order).

9. You can visit Open position page by clicking on Commodity Tab>Open Position link.

Equity Mutual Funds F&O **Commodity** Currency FD/Bonds Insurance NPS IPO Global Investment Loan Portfolio Research Markets More

Place Order Allocate Funds Limits My Favorites Margin Calculator **Open Position** Portfolio Trade Book Order Book Fast Buy / Sell Cloud Order Dashboard [+]

Testing for CR

Future

Exchange: MCX UNDERLYING View

Contract	Position	Qty	Qty Unit	Avg. Price	Price Unit	Buy Order Qty	Sell Order Qty	LTP	Actions	Blocked Margin	Min. Margin	Avl. Margin
FUT-SILVER-04-Sep-2020	Buy	30	KGS	52,900.00	RS/1KGS			52,793.00	<b>Square Off</b> Square Off at Market			
Group Total		30							My MTM Add Margin	510,430.00	491,370.00	507,240.00

Note: Base price column displays weighted average trade price of Futures on day of transaction and previous day's close price for carried forward positions.

You are advised to allocate additional margin immediately to meet shortfall if the available margin amount is displayed in red colour else such position may square off by I-Sec. This page need to be refreshed by the client by clicking on 'View' button to reflect latest details.

Please visit Underlying list page and check the details of physically settled Underlying Commodities enabled for trading in Commodities and ensure to close your position before the tender period/expiry else I-Sec will square off open positions on or before expiry considering the liquidity in the contract on best effort basis.

10. You can place square off order by clicking on 'Square off' link highlighted in above screen

Equity Mutual Funds F&O **Commodity** Currency FD/Bonds Insurance NPS IPO Global Investment Loan Portfolio Research Markets More ▾

Place Order Allocate Funds Limits My Favorites Margin Calculator **Open Position** Portfolio Trade Book Order Book Fast Buy / Sell Cloud Order Dashboard [+]

**COMMODITY SQUARE OFF (SELL ORDER)**

Exchange MCX [Markets Open](#)

Product Future

Underlying FUT-SILVER-04-Sep-2020

Quantity 30

As-on-18-Jul-2020  
12:57:04  
MCX 52,793.00  
[Best 5 Bids/Offers | Get Quote](#)

Square Off Quantity   KGS (1 Lot = 30 Quantity)  Lots

Order Validity  Day  IOC  GTC  GTD

Order Type  Market  Limit

Limit Price  [RS/1KGS](#) [Get Quote](#) [Best 5 Bids/Offers](#)

Disclosed Quantity

SLTP

In case of Good till Date (GTD) orders, I confirm that I have read the FAQs on GTD orders and understood the terms of GTD order placement, I authorize I-sec to place overnight orders for the unexecuted quantity of GTD order as per the order specifications mentioned above.

**Take the tour ...**

**Quick Links**

<a href="#">Open Positions (Equity)</a>	<a href="#">Open Positions (F&amp;O)</a>
<a href="#">Open Position (Currency)</a>	<a href="#">Order Book (Equity)</a>
<a href="#">Margin Buy</a>	<a href="#">MarginPLUS Buy Sell</a>
<a href="#">F&amp;O Profit/Loss</a>	<a href="#">Order Book (Currency)</a>
<a href="#">Order Book (F&amp;O)</a>	<a href="#">iCLICK-2-GAIN</a>

**Announcements**

- Now you can trade in new Weekly USDINR Options contracts every week which expires on Friday. [Weekly USDINR Options](#)
- hello hello hello hello hello hello hello hello hello hello hello hello hello hello hello hello hello hel more....
- M&M, MVML post 60% jump in net Q3 profit at Rs 1,476 crore; tractor EBIT up 6%. The revenues grew 12 per cent more....

**Did you know?**

IND vs NZ 2nd T20: Krunal restricts, Rohit blasts, Rishabh finishes as India level series. [know more ...](#)

**What's Hot**

Square off verification page:

Equity Mutual Funds F&O **Commodity** Currency FD/Bonds Insurance NPS IPO Global Investment Loan Portfolio Research Markets More ▾

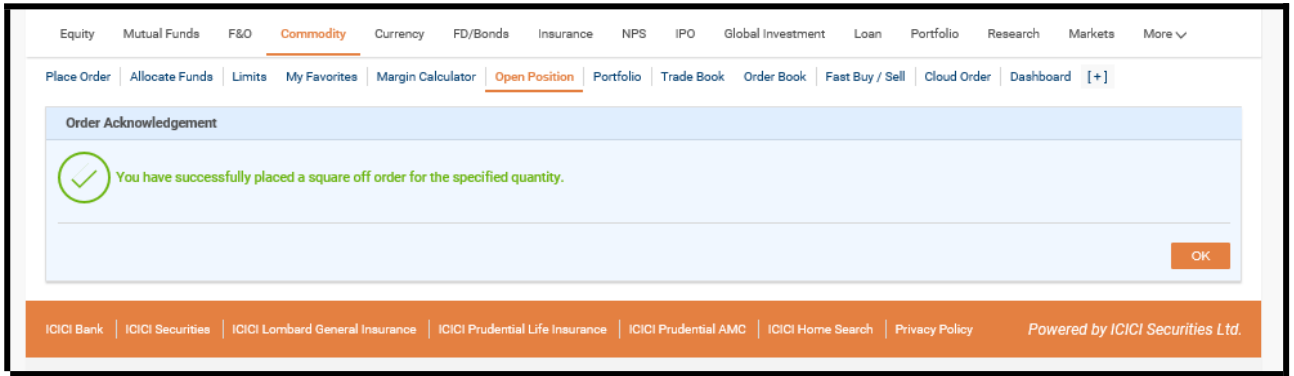
Place Order Allocate Funds Limits My Favorites Margin Calculator **Open Position** Portfolio Trade Book Order Book Fast Buy / Sell Cloud Order Dashboard [+]

**Commodity Square off (Sell order)**

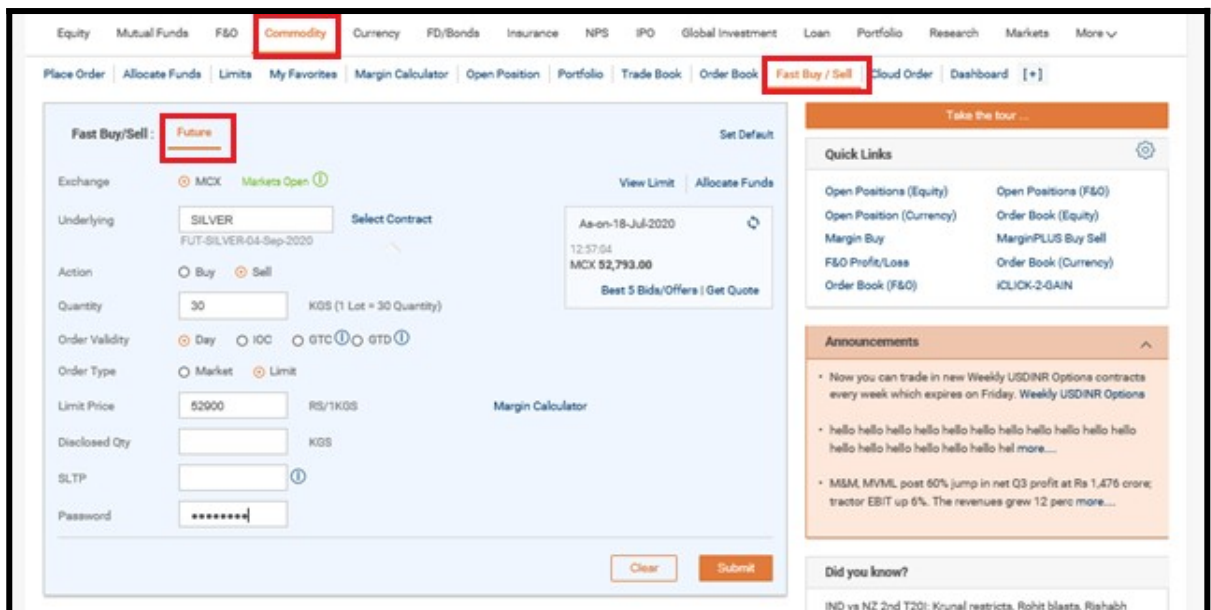
Action	Sell	Exchange	MCX
Product	Future	Contract	FUT-SILVER-04-Sep-2020
Square Off Quantity	30 KGS	Order Type	Limit
Limit Price	52,800.00 RS/1KGS		
Last Traded price	52,793.00	Estimated Order Value	1,584,000.00
Contract Expiry Date	04-Sep-2020	Order Validity	24-Jul-2020
Password	<input type="password" value="*****"/>		

ICICI Bank | ICICI Securities | ICICI Lombard General Insurance | ICICI Prudential Life Insurance | ICICI Prudential AMC | ICICI Home Search | Privacy Policy Powered by ICICI Securities Ltd.

Square off acknowledgement page:



11. Alternatively, Orders can be placed by using Fast Buy/Sell link which is available at Commodity > Fast Buy/Sell





Equity Mutual Funds F&O **Commodity** Currency FD/Bonds Insurance NPS IPO Global Investment Loan Portfolio Research Markets More ▾

Place Order | Allocate Funds | Limits | My Favorites | Margin Calculator | Open Position | Portfolio | Trade Book | Order Book | **Fast Buy / Sell** | Cloud Order | Dashboard [+]

Products: Future ▾ Exchange: MCX ▾ Status: All ▾ Underlying:  Period: 24/07/2020 to 24/07/2020 [View](#)

Contract Descriptor	Validity Type Valid Date	Buy/Sell	Qty	Qty Unit	Status	Price#	Price Unit	General Multiplier Price Multiplier	Open	Executed	Cancelled	Expired	Order Type Stop Loss Price	Action
FUT-SILVER-04-SEP-2020	Day 24-Jul-2020	Sell	30	KGS	Ordered	52900	RS/1KGS	1	30	0	0	0	RL	Modify Cancel
Order Ref.: 20200724X200000004 Exchange: MCX Channel: WEB														
FUT-SILVER-04-SEP-2020	Day 24-Jul-2020	Sell	30	KGS	Executed	52800	RS/1KGS	1	0	30	0	0	RL	Reorder
FUT-SILVER-04-SEP-2020	Day 24-Jul-2020	Buy	30	KGS	Executed	52900	RS/1KGS	1	0	30	0	0	RL	Reorder
FUT-SILVER-04-SEP-2020	Day 24-Jul-2020	Buy	60	KGS	Cancelled	52800	RS/1KGS	1	0	0	60	0	RL	Reorder

Total Position or Orders: [Cancel all orders](#)

#Price  
Indicates Limit Order (price displayed is the price at which the limit order was placed).  
Indicates Market Order (price displayed is the last traded price at the time of placement of order). Please click on Executed link to know the exact execution price.

12. You can view the complete trade details information on Portfolio page at Commodity Tab > Portfolio Link

ICICI Securities Private Wealth Management

NIFTY SENSEX **Rupesh Nagde** 850903732 Jul 24, 2020, 15:30 IST Search stocks [Logout](#)

Equity Mutual Funds F&O **Commodity** Currency FD/Bonds Insurance NPS IPO Global Investment Loan Portfolio Research Markets More ▾

Place Order | Allocate Funds | Limits | My Favorites | Margin Calculator | Open Position | **Portfolio** | Trade Book | Order Book | Fast Buy / Sell | Cloud Order | Dashboard [+]

Prod: Future ▾ Exch: MCX ▾ From: Jul ▾ 2020 ▾ To: Sep ▾ 2020 ▾ Positions: All ▾ SILVER [View](#) [Download](#)

Contract	Trade Flow	Open Position					LTP	Profit/Loss			View Details
		Qty	Qty Unit	Value	Avg. Price	Price Unit		Unrealized	Realized	Total	
FUT-SILVER-03-Jul-2020	NA	0		0.00	0.00		0.00	0.00	0.00	0.00	<a href="#">View Details</a>
FUT-SILVER-04-Sep-2020	NA	0	KGS	0.00	0.00	RS/1KGS	52,793.00	0.00	-3,000.00	-3,000.00	<a href="#">View Details</a>
<b>Total</b>								<b>0.00</b>	<b>-3,000.00</b>	<b>-3,000.00</b>	

Note: Avg. Price is displayed on FIFO basis for calculation of Unrealized or Realized Profit/Loss values.

13. You can visit Underlying list page in order to view the enabled Underlying and associated details. Path: Commodity > click on [+ ] > Underlying list.

Equity Mutual Funds F&O **Commodity** Currency FD/Bonds Insurance NPS IPO Global Investment Loan Portfolio Research Markets More ▾

Place Order | Allocate Funds | Limits | My Favorites | Margin Calculator | Open Position | Portfolio | Trade Book | Order Book | Fast Buy / Sell | Cloud Order | **[+]**



Future

UNDERLYING

Exchange:  MCX

View

Underlying Code	Underlying Name	Lot Size	Action
ALUMN	ALUMINIUM	5	<a href="#">View Margin</a>
COPPER	COPPER	2500	<a href="#">View Margin</a>
COTTON	COTTON	25	<a href="#">View Margin</a>
CRUDE	CRUDEOIL	100	<a href="#">View Margin</a>
GOLD	GOLD	1	<a href="#">View Margin</a>
GOLDGU	GOLDSUNEA	8	<a href="#">View Margin</a>
GOLDM	GOLDM	100	<a href="#">View Margin</a>
GOLDPE	GOLDPETAL	1	<a href="#">View Margin</a>
KAPAS	KAPAS	4	<a href="#">View Margin</a>